

(risk profiles)

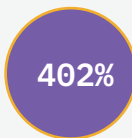
RiskBond end-to-end (duplication) (single) (collective reporting) RiskBond 가 workshops 가 (assessment) (easy-to-use) 가 (risk assessments) (frontline) 가

RiskBond

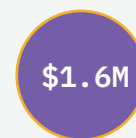
- 1 (Reactive) (action) (predictive)
- 2
- 3 (impacts & responses)
- 4 " (risk culture)" (organizational silos)
- 5 가 (data-driven) (Assessments & reporting)
- 6 (Single platform) (governance & assurance teams) (alignment)

"HighBond (risk & compliance assurance) (objective picture)

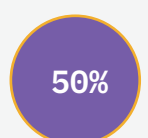
RiskBond (Risk management teams) (results)



return on investment.



net present value.



avoidable risks reduced.

- Rod Verhulp, VP of Finance, Equinix

RISK WORKSHOPS: 가 (IDENTIFICATION & ASSESSMENT)

- | | | | | | |
|---|---------------|----------------------|------------------|---|---|
| 1 | (schedule) | (remote & live) | risk workshops | 4 | (appetite & impact) |
| 2 | assessments) | (risk indicators) | 가 (risk | 5 | objectives) (map) (strategic |
| 3 | (key risks) | S&P500 10K (mapping) | (best practices) | 6 | (Curated risk library) (identify & catalog) |
| | risk universe | | | | |

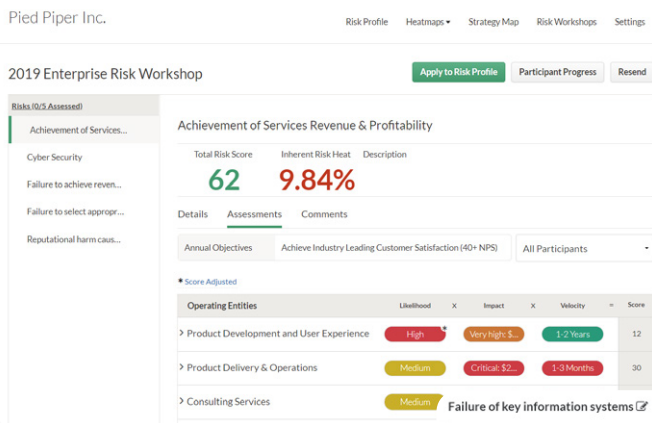


Figure 1: Conduct risk assessment voting workshops



Figure 2: Risk heatmaps improve strategic decisions

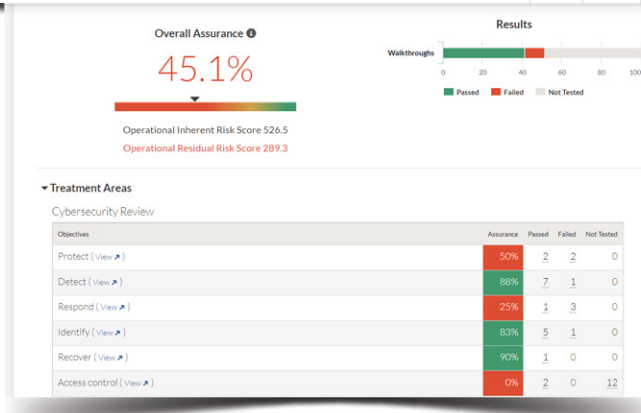


Figure 3: Provide integrated assurance

- | | | | | | |
|-------------|--------------------------|----------------------------|------------------------|-------------------------|--|
| (REAL TIME) | | | (INTEGRATED ASSURANCE) | | |
| 1 | (Real-time) | KPI KRI | 1 | (Overlap & duplication) | (assurance) |
| 2 | (visualize) | (risk trends) | 2 | (Strategic risks) | 가 (link) |
| 3 | leadership-level | (real-time risk heat maps) | 3 | (assurance frameworks) | (real-time assurance map) (highlighting) |
| 4 | Board-level () | (appetite) | 4 | (Risk profile) | (automate notifications) |
| 5 | / (metrics/indicators) 가 | (automatic notifications) | 5 | 가 | (Standardized assessment methodology) |